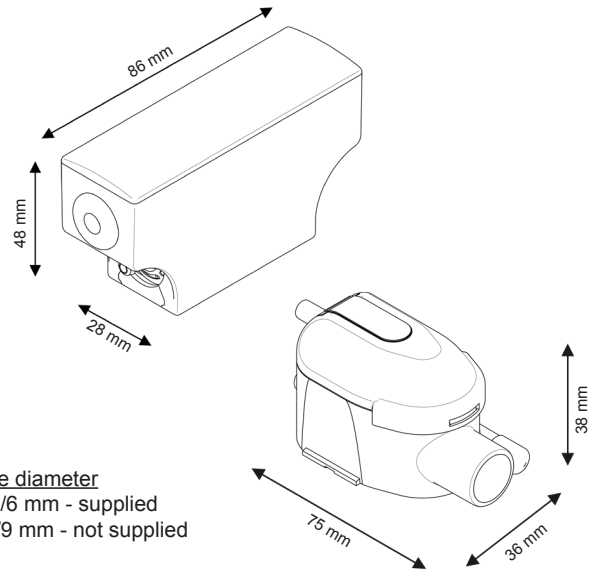


# mini FLOWATCH® 2 DUO

**SICCOM**

Mini solenoid pump reliable and silent for the condensate removal of gas condensing boilers up to 60kW / 200 000BTU.

Ref: DE05LCC500



Hose diameter  
Suction : 4/6 mm - supplied  
Discharge : 6/9 mm - not supplied

**pH > 2.5**



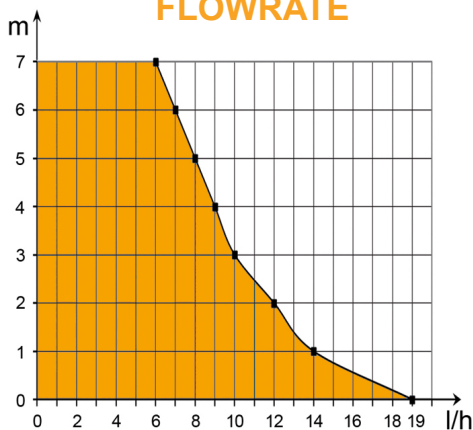
## SPECIFICATIONS

Flowrate max	19 l/h
Suction head max	0,5 m
Discharge head	10 m
pH tolerated	pH > 2.5
Electrical power	19W
Voltage	220-240V 50/60Hz
Alarm	NO-NC
Noise level*	
Protection rating	IP64
Thermal protection	Yes
Operating cycle**	100%
Power / alarm cable	1.6 m
Dimensions	86 x 28 x 48 mm / 75 x 38 x 36 mm

\* Notation from 1 wave (≤ 20 dBA) to 6 waves (> 45 dBA)

\*\* The pump is able to run 100% of the time if necessary.

## FLOWRATE



## BENEFITS



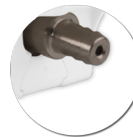
### Very silent

Very silent pump, suitable for an installation in any room.



### Quick connectors

Make installation and maintenance easier.



### Treated brass outlet

This brass outlet is specially treated to support acid condensates, and is more solid and reliable than plastic outlet.



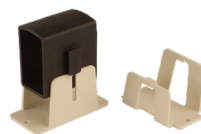
### IP64 protection

Protected against water splashes and dust.



### Clear reservoir

Facilitates maintenance thanks to a quick visualization of the reservoir state.



### Kit Silence supplied

Pump stand and reservoir stand make the installation easier and reduce the noise level.



## CONTENTS

Pump - Reservoir with air-vent tube - Power / alarm cable - Pump stand - Reservoir stand - Double-side adhesive - Inlet tube - Suction tube 0.25m - 1 clamp