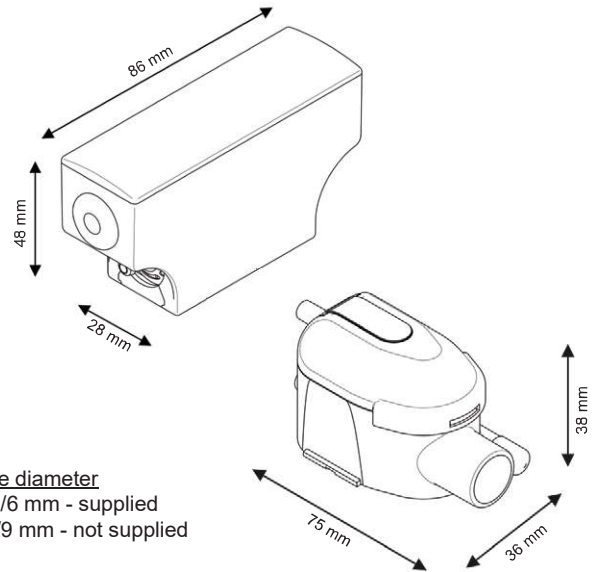


mini FLOWATCH® 2 DUO

SICCOM

Mini solenoid pump reliable and silent for the condensate removal of gas condensing boilers up to 60kW / 200 000BTU.

Ref: DE05LCC500



Hose diameter
Suction : 4/6 mm - supplied
Discharge : 6/9 mm - not supplied

pH > 2.5



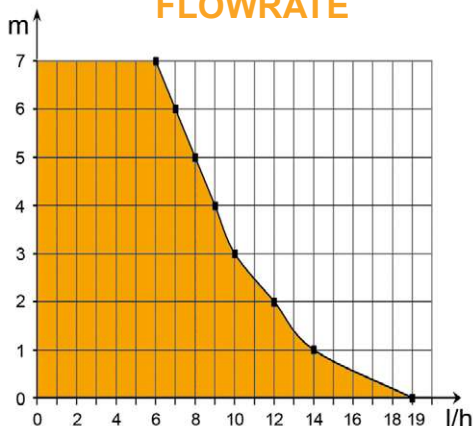
SPECIFICATIONS

Flowrate max	19 l/h
Suction head max	0,5 m
Discharge head	10 m
pH tolerated	pH > 2.5
Electrical power	19W
Voltage	220-240V 50/60Hz
Alarm	NO-NC
Noise level*	
Protection rating	IP64
Thermal protection	Yes
Operating cycle**	100%
Power / alarm cable	1.6 m
Dimensions	86 x 28 x 48 mm / 75 x 38 x 36 mm

* Notation from 1 wave (≤ 20 dBA) to 6 waves (> 45 dBA)

** The pump is able to run 100% of the time if necessary.

FLOWRATE



BENEFITS



Very silent

Very silent pump, suitable for an installation in any room.



Quick connectors

Make installation and maintenance easier.



Treated brass outlet

This brass outlet is specially treated to support acid condensates, and is more solid and reliable than plastic outlet.



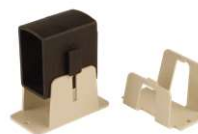
IP64 protection

Protected against water splashes and dust.



Clear reservoir

Facilitates maintenance thanks to a quick visualization of the reservoir state.



Kit Silence supplied

Pump stand and reservoir stand make the installation easier and reduce the noise level.



CONTENTS

Pump - Reservoir with air-vent tube - Power / alarm cable - Pump stand - Reservoir stand - Double-side adhesive - Inlet tube - Suction tube 0.25m - 1 clamp